

# Let's Get Loud!



VOTER GUIDE TO THE 2024 CONNECTICUT ELECTION

**SHE** LEADS JUSTICE





## LOCAL ELECTIONS ARE YOURS TO SHAPE!

## ADVOCATE AND ORGANIZE YOUR COMMUNITY!

**SLJ IS COMMITTED TO OUR LEADERSHIP IN ADVANCING ECONOMIC SECURITY FOR ALL WOMEN. JOIN US!**



## ABOUT THIS VOTER GUIDE:

- We designed this guide with inclusivity in mind and pulled from practices cultivated and led by marginalized groups.
- To counteract the erasure of women from history, this guide highlights important women across time in CT to inspire your work.
- Key terms you'll see throughout this guide are defined on page 6.

## ABOUT THIS VOTER GUIDE:

She Leads Justice's (SLJ's) Let's Get Loud: Election 2024 is designed to get you thinking about how to advocate and organize in your community this election cycle: to get loud and ensure Connecticut women are one step closer to economic security.

**Register to vote!**  
[voteregistration.ct.gov](http://voteregistration.ct.gov)



**HOT TIP**



Hot tips are insider knowledge that helps you advocate and organize better!

## TABLE OF CONTENTS

PAGE	TOPIC
1	About this guide
2	Message from SLJ's Executive Director
3	About SLJ
4	Women's Economic Security
5	Social Movement Language
6	Terms to Know
7-9	<b>Vote Like You Know:</b> Voting tips, know-how, and important dates!
10	SLJ's 2024 Policy Priorities
11	CT Child Tax Credit
12	Predictable Scheduling
13	HUSKY for Immigrants
14	Other Policies We Support Connect with SLJ



**SCAN HERE TO VISIT OUR WEBSITE!**

# A MESSAGE AND CALL TO ACTION FROM JANÉE WOODS WEBER

**SHE** LEADS  
JUSTICE

 @sheleadsjustice

 facebook.com/sheleadsjustice

 @sheleadsjustice



Dear Community Member,

Election Day is November 5th. Our democracy works best when we all participate. I'll be voting and I hope you will too. Each time we go to the polls we have the opportunity to cast our votes for the candidates who will shape policies impacting ourselves, our families and our neighbors. I hope this Voter Guide informs and inspires you to organize the people around you to advocate and vote for your shared priorities. Always remember that you hold power in your vote because elected officials are supposed to work for us, the people. Together, our votes can help create the country that all women and girls deserve.

Truly,  
Janée Woods Weber  
Executive Director, She Leads Justice



## A COMMUNITY OFFERING: HOW TO USE A QR CODE & HOW TO MAKE YOUR OWN!

We have a lot of know-how at She Leads Justice and we are fans of sharing our wealth. Here is an easy tool that can help facilitate your change work. QR codes are pictures that hold a link. Have fun and keep us in the loop! To access with an iPhone:

- Using an iPhone? Open your camera app and aim it at the QR code.
- A box will pop up with the link. Click on it.

To access with another device:

- Download a QR reader application.

### To make your own:

- Create an account on Canva.com or Bitly.com
- On Canva: QR Code can be generated once you begin a new project.
- On Bitly.com: QR codes can be generated with the QR generator on the dashboard.

Register to vote!  
[voteregistration.ct.gov](http://voteregistration.ct.gov)



# SHE LEADS JUSTICE (SLJ)

## WHO WE ARE

SLJ is a statewide, nonprofit that uses a justice and equity lens to advocate for under-resourced, marginalized women and girls in Connecticut. We work to close the civil legal justice gap and to create policy that advances women's economic security.

## WHAT WE DO

**Legal Education & Access**

**Public Policy & Advocacy**

**Community Organizing**

## WHO DO WE DO IT FOR?



**SCAN HERE TO VISIT OUR WEBSITE!**

Are you a woman living in Connecticut who needs help with employment discrimination or family law?

SLJ provides **FREE** bilingual legal information and referrals to attorneys and community agencies.

CALL OUR INFORMATION AND REFERRAL LINE:

**(860) 524-0601**

EMAIL US: [INFO@SHELEADSJUSTICE.ORG](mailto:INFO@SHELEADSJUSTICE.ORG)

Open Monday-Thursday: 9AM-2PM  
Friday: 9AM-1PM



# WOMEN'S ECONOMIC SECURITY

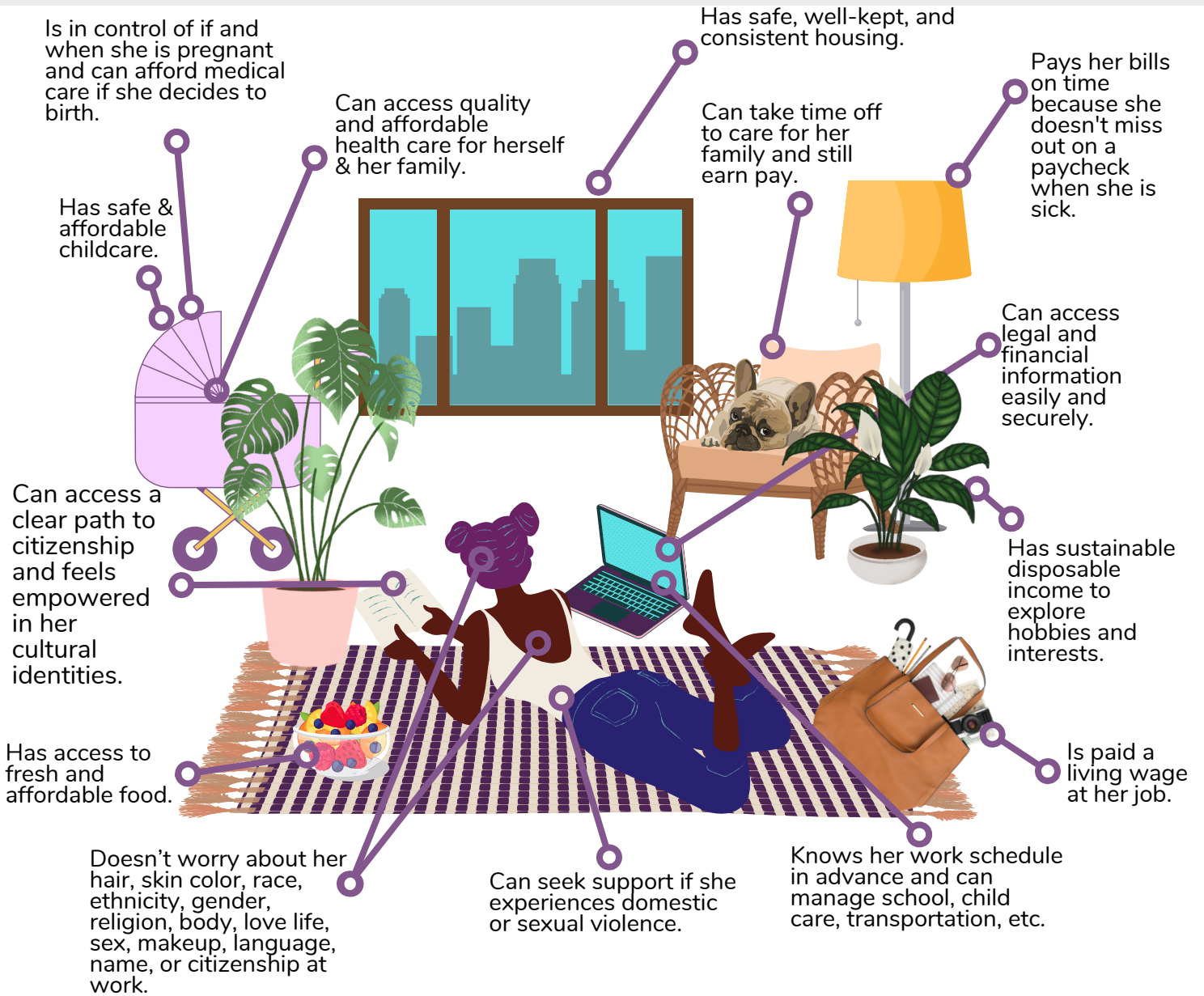
**SHE LEADS JUSTICE**

 @sheleadsjustice

 facebook.com/sheleadsjustice

 @sheleadsjustice

SLJ advocates for policies that support women's economic security. Here is a vision of what that could look like. What becomes possible for you when you can meet your needs?



**DEFINED:** Women's economic security is the condition of having a stable income or other financial resources to support themselves and/or their families.


**LIKE WHAT YOU SEE?  
SIGN UP FOR OUR  
NEWSLETTER**




**SCAN HERE  
TO JOIN OUR  
NEWSLETTER**

# SHE LEADS JUSTICE DEFINES: COMMON LANGUAGE IN SOCIAL MOVEMENT WORK

**SHE LEADS JUSTICE**

 @sheleadsjustice

 facebook.com/sheleadsjustice

 @sheleadsjustice

At SLJ, we know that language is often used to exclude people from political spaces and to discourage them from participating. Here is a list of words we commonly use and their definitions:

## ADVOCATE

publicly support or recommend a particular cause or policy



## ACTIVIST


a person who campaigns to bring about political or social change



## ORGANIZE

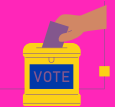
activating community members to strategize and execute social movement work



**HOT TIP!**   
**THIS IS WHAT YOU USE TO VOTE!**

## BALLOT

a sheet of paper used to cast a vote



## ABSENTEE BALLOT

a ballot completed and typically mailed in advance of an election by a voter who is unable to be present at the polls



## AFFIDAVIT BALLOT

aka provisional ballots- used when you believe you are eligible to vote but cannot submit a regular ballot



## CAMPAIGN

a connected series of strategies designed to bring about a particular result



## MOVEMENT

a group of people working to advance their shared political, social, or artistic ideas



## RALLY

a larger meeting making a political protest or showing support for a cause



## DISTRICT

a region or area of the state where you live



## CONSTITUENT

a voter who elects a person to represent them and their community or neighborhood



## LEGISLATIVE SESSION

time when the government meets to debate and pass laws



## LEGISLATURE

a body of government that passes laws in the state where you live



## LEGISLATOR

a person who is elected to represent an area of the state in order to make laws



## BILL

a draft of a proposed law



**SCAN HERE TO JOIN OUR NEWSLETTER**



## CT WOMEN LEAD: Carrie Saxon Perry

Carrie Saxon Perry was the first African-American woman to lead a major New England city as the mayor of Hartford. She is credited for helping reduce racial tension in the city. Notably, she visited Black neighborhoods after the Rodney King verdict in 1992.

Saxon Perry championed LGBTQ+ rights in Hartford, such as introducing legislation to prohibit discrimination based on sexual orientation in Hartford schools, 5 years before the policy was adopted statewide.

# SHE LEADS JUSTICE DEFINES: KEY TERMS TO KNOW FOR 2024 & 2025



SCAN HERE  
TO JOIN OUR  
NEWSLETTER

## SHE LEADS JUSTICE

@sheleadjustice

facebook.com/sheleadjustice

@sheleadjustice

## FEDERAL POVERTY LEVEL

A measurement of income, issued yearly, which is used to determine someone's eligibility for certain government benefits. In Connecticut, an estimated 13% of children live below the FPL. However, an additional 29% live above the FPL but still in hardship- and unable to afford basic needs (ALICE).

### ALICE

ALICE is an acronym which stands for Asset Limited, Income Constrained, Employed. ALICE families are ones who earn below the cost-of-living threshold. This includes families who earn below and above the federal poverty level. Simply put, ALICE families struggle to make ends meet.

## REGRESSIVE TAX STRUCTURES

This occurs when policies are in place where tax rates decrease as a person's income increases. Meaning, individuals with higher incomes pay a smaller percentage of their earnings.

## BENEFITS CLIFF

A sudden drop off of public benefits after a small wage increase. This can leave families who are on the cusp of better economic security, in a precarious and unfair situation.

## RACIAL/ETHNIC WEALTH GAP

The disparity of typical assets between races and ethnicities. In CT this gap can be seen by observing median income: In white households this is just over 95k, whereas in Black and Hispanic households it is closer to 54k and 51k respectively.

## FISCAL CONTROLS (AKA FISCAL GUARDRAILS)

A type of spending cap on the state's budget. Our newest spending cap, established in 2017, was paired with annual limits on bond issues, a revenue cap and a volatility adjustment. Together these create fiscal controls. You may also hear them referred to as fiscal guardrails.

### FISCAL CONTROL TERMS EXPLAINED:

#### BOND ISSUANCE CAP

Connecticut borrows billions of dollars annually by issuing general obligation bonds on Wall Street, and the bond issuance cap limits the amount it can sell in a given fiscal year.

#### REVENUE CAP

The revenue cap requires that the state budget have a built-in cushion of, at a minimum, 1.25% of the General Fund, which is the fund that accounts for general operations in the state

#### SPENDING CAP

The state's spending cap limits the annual growth in state spending by restricting the legislature's authority to make appropriations. It generally bars the legislature from authorizing an increase in general budget expenditures for any fiscal year that exceeds the greater of the growth in personal income or increase in inflation.

## WHAT DOES THIS ALL MEAN?

Connecticut's fiscal controls, or guardrails, were originally enacted in 2017 as part of a new budget compromise to address the state's fiscal crisis. Today, seven years after these were put in place, CT is projected to have around 4.1 billion dollars in its rainy-day fund. With the current fiscal controls, legislators are prevented from using a large portion of this money, and many CT residents are struggling to make ends meet. With massive disparities continuing to grow in our state, it is clear adjustments to these controls need to be made so programs, services, and resources can be made available to CT residents.

#### VOLATILITY ADJUSTMENT

The volatility cap is tied to two state revenue sources: estimated and final income tax revenue and Pass Through Entity (PE) tax revenue. Estimated and final income tax payments generally come from investments, such as capital gains realized in the stock market, and thus fluctuate with economic booms and busts. The PE tax is an entity-level income tax on most pass-through businesses and is similarly volatile due to these fluctuations. The volatility cap functions as a limit on the amount of this revenue that may be used to balance the budget.

# VOTE LIKE YOU KNOW!

An SLJ guide to help you prep yourself and others to vote!

## IMPORTANT VOTER DATES



### SEPTEMBER

- September 16th, 2024
  - List of candidates who will appear on your ballot is finalized
- September 17th, 2024
  - National Voter Registration Day!

### OCTOBER

- October 4th, 2024
  - Absentee ballots are available. Download your application online or pick it up at your Town Clerk's office.

### NOVEMBER

- November 5th, 2024
  - ELECTION DAY!



CONNECTICUT ALLOWS SAME DAY REGISTRATION HOWEVER, SLJ RECOMMENDS REGISTERING AHEAD OF TIME TO AVOID POTENTIAL ISSUES

## 5 THINGS TO DO BEFORE YOU VOTE:

- 1 CREATE A LIST OF NEEDS**
  - Think of:
    - What do you, your family, your communities and your cities need?
- 2 RESEARCH**
  - Candidates
  - Needs and solution
  - Your polling place
- 3 REGISTER**
  - Check your registration or register on line or at your town hall!
- 4 ADVOCATE**
  - GET LOUD ON:
    - Social Media
    - Social Events
    - Campaign Events
- 5 ORGANIZE**
  - Join a Campaign!
  - Create a strategy with your community



### HOT TIP:

Register to vote: [voteregistration.ct.gov](http://voteregistration.ct.gov)



### GET LOUD!

Share on your social media pages about the election and remind folks to vote!

### ORGANIZE!

- Set up a table with our information in your community.
- Talk to your community about women's economic security.
- Register your community to vote!

## CT WOMEN ORGANIZE: Maria C. Sanchez (La Madrina)

Affectionately known as la madrina (the godmother) of the Hartford Puerto Rican community, Maria Clemencia Colón Sanchez was a respected advocate, listener and mentor. She served on the Hartford Board of Education and advocated for bilingual education in public schools. In 1988, she became the first Hispanic woman elected to the CT General Assembly.

As an activist, Sanchez founded the Puerto Rican Parade Committee in 1964 and co-founded La Casa de Puerto Rico, the Society of Legal Services, the Spanish-American Merchants Association, the Puerto Rican Businessmen Association, and the Community Renewal Team.







# VOTE LIKE YOU KNOW!

An SLJ guide to help you prep yourself and others to vote!

## VOTE LIKE YOU KNOW HOT TIPS!



Check your registration status and polling place online before heading to vote on [voterregistration.ct.gov](http://voterregistration.ct.gov)



CT asks for identification, but you can sign an affidavit if you don't have one on election day.



Use an absentee ballot if there is a chance you will be unable to cast your vote in person on election day.



You can still vote on Election Day if you make it into the line by 8:00 pm regardless of your position in line.

Register to vote!  
[voteregistration.ct.gov](http://voteregistration.ct.gov)

## CT WOMEN IN HISTORY: MARGARET E. MORTON



Margaret E. Morton's career in politics was sparked by organizing her own **Bridgeport neighborhood** to urge the city to install a stop sign at the site of frequent car accidents. Morton became the **first African American woman to serve in the C House of Representatives in 1972**. In 2012, the Bridgeport City Hall Annex was named the Margaret E. Morton Government Center.

## ORGANIZE!



Hey! Coordinate rides to your local polling station and provide childcare to help women vote!

## WHO'S ON YOUR BALLOT?

**1**

### U.S. PRESIDENT & U.S. VICE PRESIDENT

- **U.S. President:** The head of state and head of government in the U.S. Elected in 4-year terms.
- **U.S. Vice President:** 2nd highest official in the executive branch. First in line of succession to the President. Is also the President of the Senate. elected in 4-year terms.

**2**

### CONGRESS (U.S. SENATE & HOUSE)

- **U.S. Senators:** 2 elected six-year positions that represent the state at the federal government
- **U.S. Representative:** represent the 5 CT congressional districts, elected to the House of Representative for a two-year term

## GET LOUD!

Report intimidation to the Election Protection Hotline at 1-866-OUR-VOTE or 1-888-VE-Y-VOTA (en Español).

**3**

### STATE LEGISLATURE (SENATE & HOUSE)

- **State Senator:** Elected to serve in the State Senate for a two-year term
- **State Representative:** Elected to serve in the House of Representatives for a two-year term

**4**

### STATEWIDE OFFICE (AKA CONSTITUTIONAL OFFICE)

- **Governor:** the highest state office
- **Lieutenant Governor:** the first in line to succeed the Governor and tie breaker in the state senate
- **Attorney General:** CT's top legal officer
- **Secretary of State:** keeps official records, provides services to businesses, administers all state and federal election law
- **State Treasurer:** responsible for the state's cash, debt and pension funds management
- **State Comptroller:** provides accounting and financial services to the state



# VOTE LIKE YOU KNOW!

An SLJ guide to help you prep yourself and others to vote!

## VOTE LIKE YOU KNOW: EARLY VOTING V. ABSENTEE VOTING

### EARLY VOTING

IN CONNECTICUT ANY VOTER CAN CHOOSE TO VOTE EARLY IN PERSON AT THEIR REGISTERED VOTING PLACE. THE VOTES ARE HELD SECURELY AND COUNTED WHEN THE POLLS CLOSE ON ELECTION DAY AT 8PM.

CONNECTICUT  
EARLY VOTING DATES:  
OCT. 21- NOV. 3, 2024

### ABSENTEE VOTING

IN CONNECTICUT, VOTERS QUALIFY FOR ABSENTEE VOTING IN CASES OF:

ACTIVE  
MILITARY  
SERVICE

ABSENCE  
FROM  
TOWN  
DURING  
VOTING  
HOURS

PHYSICAL  
DISABILITY

RELIGIOUS  
BELIEFS  
PREVENTING  
SECULAR  
ACTIVITY ON  
VOTING DAY

DUTIES AS AN  
OFFICIAL AT A  
DIFFERENT  
POLLING  
PLACE

ILLNESS

**1** GRAB AN ABSENTEE VOTING APPLICATION AT YOUR TOWN CLERK'S OFFICE OR FILL ONE OUT ONLINE AT: [MYVOTE.CT.GOV/ABSENTEE](https://myvote.ct.gov/absentee)



**SCAN  
HERE**

[MYVOTE.CT.GOV/ABSENTEE](https://myvote.ct.gov/absentee)

**2** RECEIVE YOUR BALLOT BY MAIL ONCE YOUR APPLICATION HAS PROCESSED

**3** READ DIRECTIONS THOROUGHLY AND FILL OUT APPLICATION AS DIRECTED.

**4** SUBMIT YOUR BALLOT VIA USPS, AT YOUR TOWN CLERK'S OFFICE, OR AT A SECURE BALLOT DROPBOX IN YOUR TOWN.

**ABSENTEE BALLOTS MUST BE SENT BY OR BEFORE ELECTION DAY AT 8PM. IF BEING MAILED, BALLOTS MUST ARRIVE BEFORE OR BY ELECTION DAY**

SESSION BEGINS JANUARY 8TH, 2025

Next legislative session begins January 8, 2025.

# AN OVERVIEW OF SLJ'S POLICY PRIORITIES

SLJ advocates for legislation at the State Capitol that advances women's economic security. Our key priorities for 2025 include, a Connecticut Child Tax Credit, Predictable Scheduling, and HUSKY 4 Immigrants.

**Page Guide:** Below are actions you can take to **advocate** and **organize** in your community on each issue. True to organizing practices, we've provided a script to help you advocate. Share with us how it goes!

## CHILD TAX CREDIT

A permanent and refundable child tax credit in CT would provide flexible and dependable income to approximately 250,000 households and 550,000 children. This would give families much needed help to cover basic necessities which many of them struggle to afford.

Script: With costs of living continuously increasing, many families in CT struggle to make ends meet. CT is the only state that taxes families' incomes and doesn't offer a tax policy that offsets the cost of raising children. Implementing a child tax credit would reach 75% of families across every zip code in our state and help them provide basic necessities for their children. Investing in our children is a responsibility, not a handout.

Think about how a child tax credit would help you and your household and reach out to your legislator to tell them today!

## PREDICTABLE SCHEDULING

Workers in CT deserve to have advance notice of when they will be working so they can plan other parts of their lives.

Script: Women want and need to work! But often they also carry more of the burden for caring for children and family members. Women in CT should have predictable scheduling so they can plan tasks such as doctor appointments, shopping, school events, coordinating rides, and more!

How would having advanced notice of a work schedule help you or a loved one?

## HUSKY 4 IMMIGRANTS

All Connecticut residents, regardless of immigration status or age, deserve access to healthcare

Script: Investing in the health of ALL Connecticut residents, helps the state as a whole. Health coverage means preventative care, which translates into lower uncompensated care costs for hospitals, lower costs for the state, and most importantly, it helps us all be healthier!

How has the presence or lack of adequate healthcare affected you and the people you care about? How would it impact you if that were to change?

Need to check your voter registration, help to engage voters, or other voting resources? Check out the Voting is Social Work website!



## CT WOMEN IN THE LAW: Constance Baker Motley

Constance Baker Motley was a civil rights advocate and the first African American woman to not only argue a case before the Supreme Court, but to become a federal judge. From 1945 to 1964, Judge Motley worked on all of the major school segregation cases supported by the NAACP Legal Defense Fund. She wrote the legal brief for the landmark **Brown vs. Board of Education** case and also played a prominent role in desegregation cases involving universities of Mississippi, Alabama, Florida, Oklahoma, and Georgia. Judge Motley won **nine out of the ten** cases she argued before the Supreme Court.



# SLJ POLICY PRIORITY CT CHILD TAX CREDIT



SCAN HERE TO VISIT OUR WEBSITE!

## WHAT'S THE PROBLEM?

Connecticut is the only state with a broad personal income tax that does not adjust for the costs of raising a child or the number of children. Data shows that almost 40% of CT households are living below the ALICE threshold, generally meaning they are struggling to make ends meet or within poverty levels. A permanent and refundable child tax credit would provide flexible and dependable income to over 550,000 children in CT.

**HOT TIP** Scan QR code to learn more about Child Tax Credit!



## WHY A CHILD TAX CREDIT?



Raising a family costs money! CT is an expensive state to live in; almost 40% of families need help making ends meet to provide their family with necessities.



CT is the **ONLY** state with a broad personal income tax, that does **NOT** adjust for costs of raising children **OR** the number of children in a household. This does not make sense for CT families!



Single women and women of color with children in CT are especially impacted by the costs of raising a family and providing basic necessities! No child should go without what they need to thrive!

## THE SOLUTION



A permanent and fully refundable CT child tax credit of \$600 per child would provide flexible and dependable income for over 550,000 children in our state!



## GET TOGETHER TO DEMAND A CT CHILD TAX CREDIT!

Tackling an issue alone can feel overwhelming! Organize family members, friends, co-workers, or people from church or school. Scan the QR code to find your legislators and write them a letter explaining why a child tax credit matters to you!



## GET LOUD! ASK YOUR CANDIDATES:

- ? Do you support a CT child tax credit?
- ? If you're elected, what will you do to help get a child tax credit passed?



## SLJ POLICY PRIORITY PREDICTABLE SCHEDULING



SCAN HERE TO VISIT OUR WEBSITE!

### WHAT'S THE PROBLEM?

In Connecticut, hourly workers - many earning poverty wages - struggle to earn a stable and reliable income needed to support their families because of unpredictable work schedules. Workers are often forced to go to work with little notice, maintain open availability for "on-call" shifts without any guarantee of work and have their shifts canceled at the last minute. This uncertainty makes it difficult to hold a second job (which is often fiscally necessary), schedule appointments, plan childcare, run errands, and so much more

#### WHY?

When workers don't know their schedules, they can't:



Secure quality and affordable child care



Attend doctor appointments for themselves or their family members



Go to school to earn a degree or certificate

### THE SOLUTION



We support legislation that provides hourly workers:

- Two weeks' notice about their work schedules.
- Incentives for last minute schedule changes.
- 11-hour rest periods between shifts.
- OR the ability to earn overtime within that 11-hour period.

#### HOT TIP

Predictable Scheduling (AKA Fair Work Week) legislation has been introduced the last 6+ years but has yet to pass. Now is the time to get involved!

#### GET LOUD! ASK YOUR CANDIDATES:

? Do you support predictable scheduling legislation?

? If you're elected, what will you do to address unfair working conditions for workers in CT?

### CT WOMEN IN HISTORY: Edythe Gaines

Edythe Gaines was the first woman and first African-American to serve as superintendent in Connecticut. She went on to serve as commissioner to the State Department of Public Utility Control and in 1992 was named to the Board of Governors of Higher Education. She was inducted into the CT Women's Hall of Fame in 1996.

Her son, Richard, is quoted as saying his mother "believed in kids, even when they didn't believe in themselves".



# SLJ POLICY PRIORITY HUSKY 4 IMMIGRANTS



## WHAT'S THE PROBLEM?

Almost 60% of the roughly 113,000 undocumented individuals in Connecticut, do not have access to health insurance coverage. After our world's experience with a global pandemic, we know that everyone having access to healthcare and health insurance is essential. Although the CT legislature has made progress in the last few years, too many people are still being left behind.

## WHY?



Everyone needs access to critical preventative healthcare!



When residents don't have access to preventative care, it ends up costing our state's economy, hospitals, and our providers, significant amounts of money



The recent changes to HUSKY have shown us the impacts of these expansions are positive ones! There is no reason for anyone to get left behind!

## THE SOLUTION

Over the last few years Connecticut has expanded HUSKY coverage to children age 0-15, as well as to undocumented pregnant people for prenatal and postpartum care. BUT She Leads Justice knows that we have not gone far enough. We need to pass a policy for everyone in Connecticut to have access to HUSKY regardless of their immigration status or their age!

### HOT TIP!



Scan the QR code to be a part of the HUSKY 4 Immigrants movement!



## THE TIME TO ORGANIZE IS ALWAYS NOW!

Start conversations to get you friends, family, colleagues, and fellow parents involved in this important issue! Call your legislators or write them a letter to tell them why it's important for all people to have access to health insurance in our state!

## GET LOUD & ASK YOUR CANDIDATES:

? Do you support HUSKY 4 Immigrants?

? How will you work to ensure this policy is passed in 2025?





# WHERE WE SUPPORT

Transformative policy change happens when we work together. SLJ is a member of coalitions and supports the leadership of our partners. Learn more below:

## Child Care

We support the Child Care for CT's Future Coalition and advocate for a system of universal child care.

## Gun Control

We support the leadership of the CT Against Gun Violence and policies that keep our communities safe from gun violence.

## Connecticut for All

We support the Connecticut For All Coalition's efforts to create greater transparency and build equity into our state's current tax structure.

## LGBTQIA+ Rights

We support policies to advance and protect the rights of the LGBTQIA+ community and follow the leadership of their advocates & organizers.

## Protections from Sexual & Domestic Violence

We support the leadership of the CT Coalition Against Domestic Violence (CCADV) and the CT Alliance to End Sexual Violence to advocate for increased protection for victims and survivors.

## Abortion Rights & Reproductive Health Care

We are a member of the Coalition for Choice and support the leadership of PPSNE and Pro-Choice CT to advocate for policies to increase access to reproductive health and abortion care.

## Housing

We support policies that provide more inclusive housing opportunities for families in the communities where they want to live. We support groups like the CT Fair Housing Center.

## Gender Wage & Wealth Gap

We support legislation that addresses gendered pricing, as well as other policies that lead to pay equity and more transparency. We also support policies that curb or cancel student debt and the leadership of the Student Loan Fund.

## CONNECT WITH US!

### 1. FOLLOW & SUBSCRIBE



@sheleadsjustice



facebook.com/sheleadsjustice



@sheleadsjustice

### 2. SIGN UP FOR OUR NEWSLETTER!

### 3. REACH OUT FOR LEGAL INFORMATION

- If you need legal information, contact us at the Information & Referral (I&R) phone line:
- (860) 524-0601 or Toll Free: 1-800-479-2949
- Monday through Thursday: 9 am – 2 pm and Friday: 9 am – 1 pm



SCAN HERE TO JOIN OUR NEWSLETTER



## CT Women in Activism: Shawn Lang

Shawn Lang was a champion for **LGBTQ rights in CT** and a **longtime AIDS activist**. As a tireless and relentless advocate, Lang worked with partners to successfully fight for the inclusion of sexual orientation, gender identity and expression in Connecticut's hate crimes and anti-discrimination laws, as well as increased support for people experiencing homelessness, domestic violence, opioid addiction and more.

Lang was honored as a Champion of Change for Advancing Prevention, Treatment and Recovery by former President Barack Obama.